



## RE600 CryptiX™-Compatible KeyFob

### Features

- Portable device for controlling security systems remotely.
- 4-buttons with firm feel.
  - Lock/Unlock.
  - Lights/Star.
- Strong, reliable RF signal.
- Tangle-free key ring
- 4-6 year battery life on GP27A battery.

### Key Instructions

- Battery “+” faces towards LED.

### Enrollment

- Place panel in enrollment mode.
- Press Lock and Unlock buttons simultaneously.

### Operation

Press buttons to cause programmed responses.

### Specifications

Button Functions:

Lock=Arm Away, Lights=Arm Stay, Star=No Function, Unlock=Disarm

Not supervised.

Replacement Battery: GP27A 12V, 20mA-H, Zinc Manganese Dioxide

Temperature Range: 0F to 120F

Housing dimensions: 2.4x1.3x0.55 inches

Specifications subject to change without notice.



## RE600 CryptiX™-Compatible KeyFob

### Features

- Portable device for controlling security systems remotely.
- 4-buttons with firm feel.
  - Lock/Unlock.
  - Lights/Star.
- Strong, reliable RF signal.
- Tangle-free key ring
- 4-6 year battery life on GP27A battery.

### Key Instructions

- Battery “+” faces towards LED.

### Enrollment

- Place panel in enrollment mode.
- Press Lock and Unlock buttons simultaneously.

### Operation

Press buttons to cause programmed responses.

### Specifications

Button Functions:

Lock=Arm Away, Lights=Arm Stay, Star=No Function, Unlock=Disarm

Not supervised.

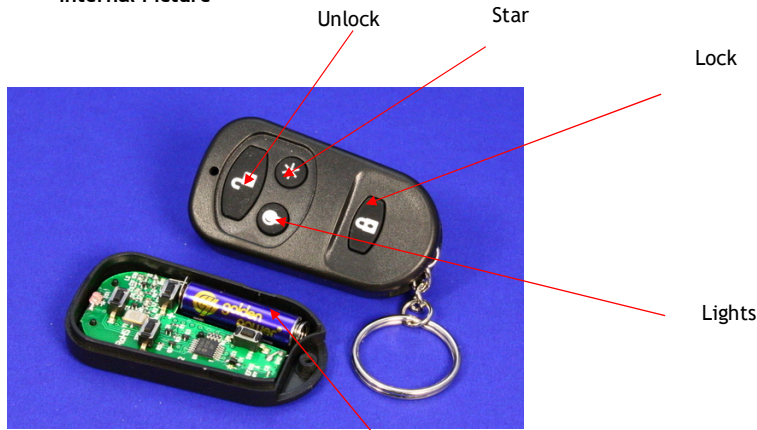
Replacement Battery: GP27A 12V, 20mA-H, Zinc Manganese Dioxide

Temperature Range: 0F to 120F

Housing dimensions: 2.4x1.3x0.55 inches

Specifications subject to change without notice.

**Internal Picture**



GP27A Battery  
+ Terminal towards LED (top)

**Notices**

Warranty

Resolution Products, Inc. will replace products that are defective in their first two (2) years.

FCC Notice

This device complies with Part 15 of the FCC rules. Operation is subject to the following two conditions:

This device may not cause harmful interference.

This device must accept any interference that may be received, including interference that may cause undesired operation.

Changes or modifications not expressly approved by the Resolution Products, Inc. could void the user's authority to operate this equipment.

FCC ID: U5X-RE300

IC Notice

This device complies with Industry Canada license-exempt RSS standard(s). Operation is subject to the following two conditions:

(1) This device may not cause interference, and

(2) This device must accept any interference, including interference that may cause undesired operation of the device.

Le présent appareil est conforme aux CNR d'Industrie Canada applicables aux appareils radio exempts de licence. L'exploitation est autorisée aux deux conditions suivantes :

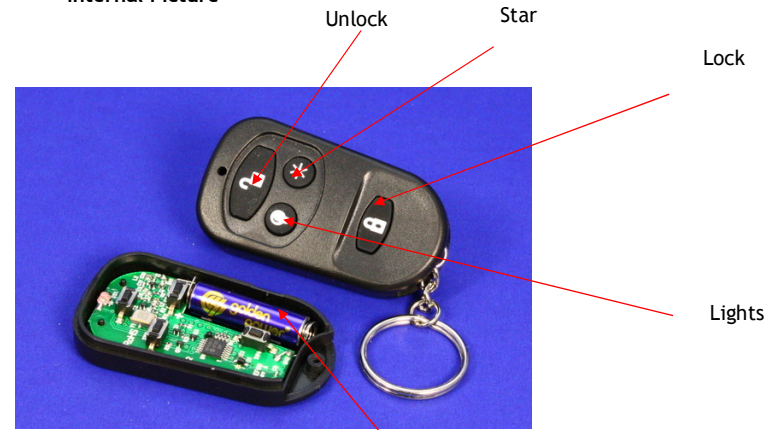
(1) l'appareil ne doit pas produire de brouillage, et

(2) l'utilisateur de l'appareil doit accepter tout brouillage radioélectrique subi, même si le brouillage est susceptible d'en compromettre le fonctionnement.

IC: 8310A-RE300  
47-0003-08\_RevX

RE600\_Cryptix-Compat\_KeyFob 6-Feb-15  
24-Hour Tech Support Line: (715)808-0164  
[www.ResolutionProducts.com](http://www.ResolutionProducts.com)

**Internal Picture**



GP27A Battery  
+ Terminal towards LED (top)

**Notices**

Warranty

Resolution Products, Inc. will replace products that are defective in their first two (2) years.

FCC Notice

This device complies with Part 15 of the FCC rules. Operation is subject to the following two conditions:

This device may not cause harmful interference.

This device must accept any interference that may be received, including interference that may cause undesired operation.

Changes or modifications not expressly approved by the Resolution Products, Inc. could void the user's authority to operate this equipment.

FCC ID: U5X-RE300

IC Notice

This device complies with Industry Canada license-exempt RSS standard(s). Operation is subject to the following two conditions:

(1) This device may not cause interference, and

(2) This device must accept any interference, including interference that may cause undesired operation of the device.

Le présent appareil est conforme aux CNR d'Industrie Canada applicables aux appareils radio exempts de licence. L'exploitation est autorisée aux deux conditions suivantes :

(1) l'appareil ne doit pas produire de brouillage, et

(2) l'utilisateur de l'appareil doit accepter tout brouillage radioélectrique subi, même si le brouillage est susceptible d'en compromettre le fonctionnement.

IC: 8310A-RE300  
47-0003-08\_RevX

RE600\_Cryptix-Compat\_KeyFob 6-Feb-15  
24-Hour Tech Support Line: (715)808-0164  
[www.ResolutionProducts.com](http://www.ResolutionProducts.com)