



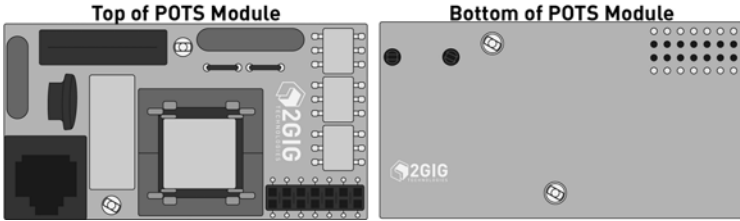
# POTS MODULE

## INSTALL INSTRUCTIONS

These instructions are written for use when installing a 2GIG-GC POTS Module into a 2GIG Control Panel.

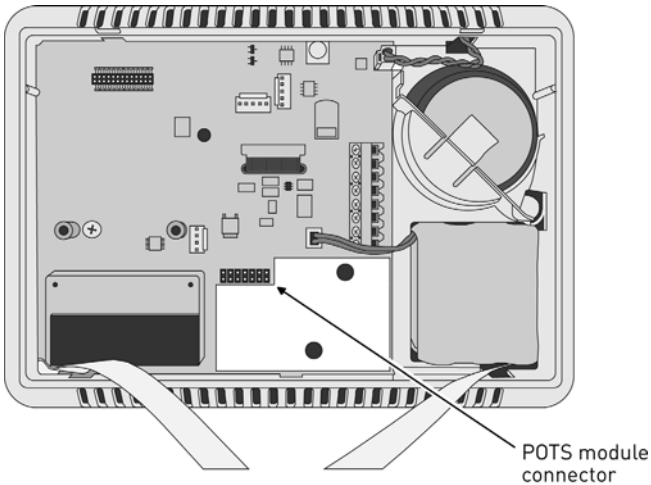
### Box Contents

- POTS Module
- Install Instructions



## INSTALLING

- 1 Remove the back plate of the Control Panel. The following figure shows the back of the Control Panel without a POTS Module installed.

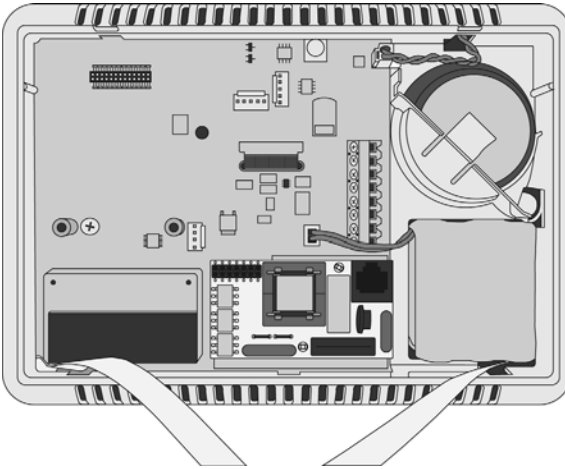


- 2 Match the 7 x2 pin set and the 2 white mounting clips on the back of the POTS Module to the open pin set and 2 holes on the back of the Control Panel.



- 3 Push the POTS Module gently down onto the Control Panel until it snaps into place.

- 4 Check to ensure that the back of the Control Panel when the POTS Module looks like the following figure.



## Un-installing the POTS Module

Because the white mounting clips snap into place, you will need a pair of needle-nosed pliers before proceeding.

- 1 Using the needle-nosed pliers, pinch the barbs on the white mounting clips that are protruding from the top of the POTS Module.
- 2 Carefully slide the POTS Module straight up.
- 3 Repeat for the remaining mounting clip to completely remove the POTS Module from the Control Panel.

**IMPORTANT:** The mounting clips remain with the Control Panel and the installer will have to acquire new mounting clips to use the POTS Module again.

**NOTE:** If installing a POTS Module on a Control Panel that already has mounting clips from a previous POTS module attached, remove the clips from the POTS Module by following the steps above.

## LIMITED WARRANTY

This 2GIG Technologies product is warranted against defects in material and workmanship for 1 year. This warranty extends only to wholesale customers who buy direct from 2GIG Technologies or through 2GIG Technologies' normal distribution channels. 2GIG Technologies does not warrant this product to consumers. Consumers should inquire from their selling dealer as to the nature of the dealer's warranty, if any.

There are no obligations or liabilities on the part of 2GIG Technologies for consequential damages arising out of or in connection with use or performance of this product or other indirect damages with respect to loss of property, revenue, or profit, or cost of removal, installation, or reinstallation. All implied warranties for functionality, are valid only until the warranty expires. This 2GIG Technologies Warranty is in lieu of all other warranties expressed or implied.

Warranty service return address:

2GIG Technologies, Inc.  
2961 W Maple Loop Drive  
Lehi, Utah 84043

**For technical support in the USA and Canada**

855-2GIG-TECH (855-244-4832)

**For technical support outside of the USA and Canada**

Contact your regional distributor

Visit [2gig.com](http://2gig.com) for a list of distributors in your region

PN 77-000065-001 Rev B

2GIG Copyright © 2013. All rights reserved.